



# MAC Post Cleaner

## ***Accurate and Consistent Terminal Post Polishing With Four Cleaning Heads!***

- ◆ All Plastic Conveyor
- ◆ Rugged T-Slot Frame Construction
- ◆ Four Individual Cleaning Heads
- ◆ Quick, Easy Tool Changes
- ◆ Hooded Particle Collector
- ◆ Variable Conveyor Belt Speed
- ◆ Easy Access Controls

The **MAC Post Cleaner** is complete with four hydraulically powered brushing heads, which are designed to clean two top terminals and two side terminals in one cycle. Both the top and side cleaning units are adjustable vertically and horizontally to process a variety of automotive battery sizes. This cleaner can process fifteen to twenty batteries per minute to save you time, labor, and money!

### **ALL PLASTIC CONVEYOR -**

A 1.52 m long (5 foot) flow-through conveyor is standard. The conveyor belting is 381 mm (15 inches) wide and is driven by an electric motor. A photo eye detects the presence of a battery at the conveyors exit end to indicate any backups on the adjoining conveyor. A "stop-clamp assembly" is mounted at the conveyor entrance to prevent the incoming batteries from interfering with the "in-process" battery.

### **RUGGED TUBULAR FRAME CONSTRUCTION -**

The MAC Post Cleaner is built to last! A rigid aluminum T-slot frame is standard.

### **FOUR INDIVIDUAL CLEANING HEADS -**

The cleaning assembly has four hydraulically powered brushing heads; two for the top terminals and two for the side terminals. A control switch is standard equipment that enables the operator to select having all four brushing heads operate concurrently, or with the top and/or side heads separately each cycle. The top brush units overhang the conveyor, and are mounted to a linear slide, which is attached to the frame. The side brush units are mounted to a linear slide on the front of the conveyor.

### **QUICK, EASY TOOL CHANGES -**

Keyless drill chucks allow quick brush changes. A complete "battery group" changeover is accomplished in minutes without using any hand tools!

### **HOODED PARTICLE COLLECTOR -**

A built-in dust collector for particle collection is standard equipment. The particulate collection is rated at 99% efficiency. A manual "agitator" mechanism shakes out the particulate and cleans the filter.

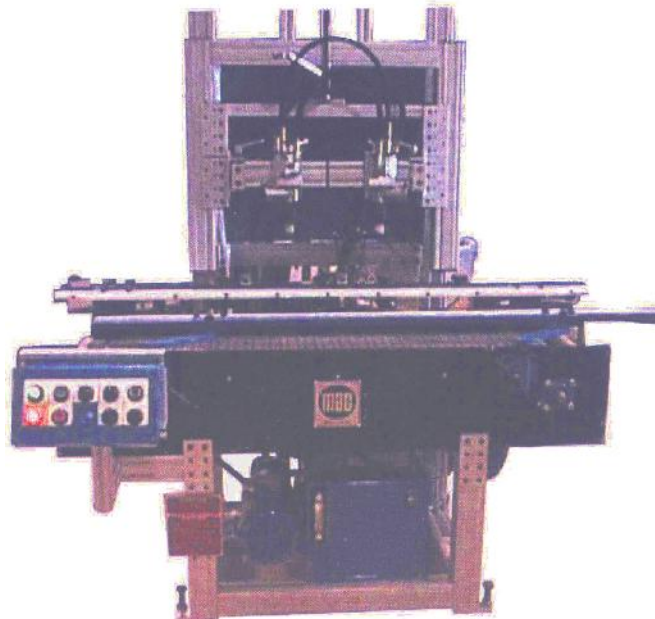
The collector unit is 1016 mm (40 inches) high, 965 mm (38 inches) long and 670 mm (26.40 inches) wide. The hood includes two 50.8 mm (2-inch) pipe openings on the collection unit.

### **VARIABLE CONVEYOR BELT SPEED**

The conveyor belt has a variable speed drive, which can be used at operating speeds up to 6.1 m (20 feet) per minute. The edge-guides, side-clamps, and entrance-stop member are all plastic for maximum durability. The customer must designate the preferred conveyor belt flow direction (left to right, or right to left when facing the operator control panel side of the post cleaner).

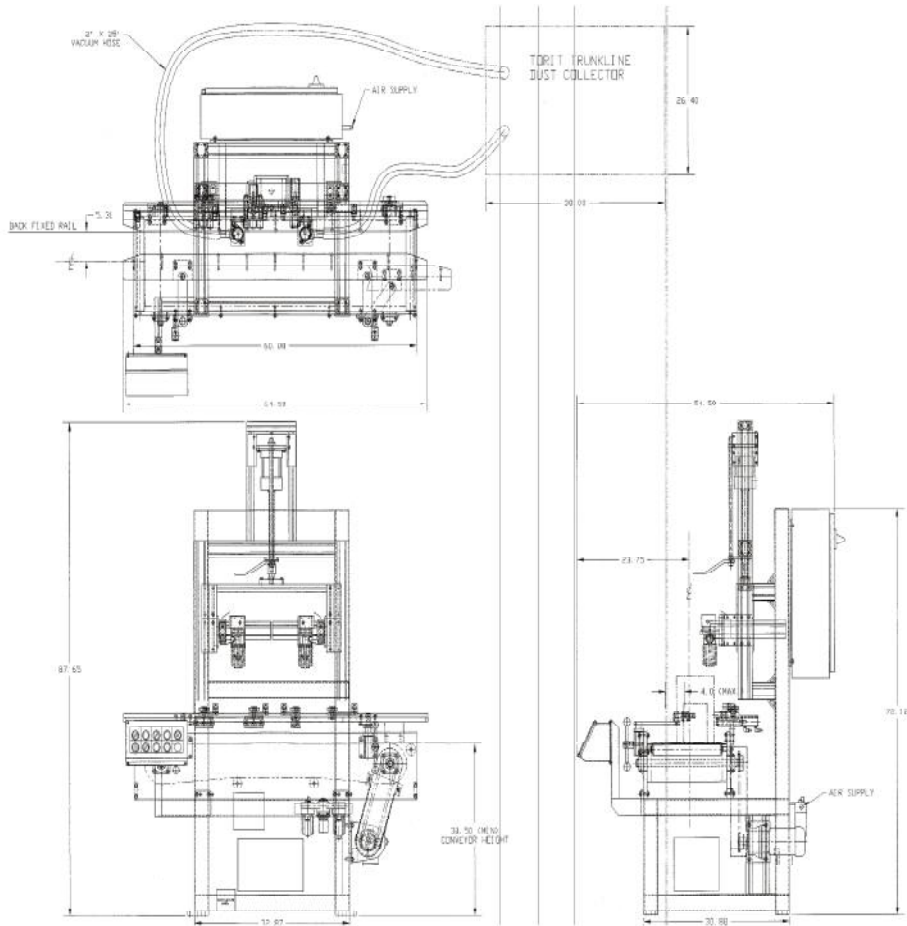
### **EASY ACCESS CONTROLS -**

A user-friendly control panel is within easy reach of the operator and is mounted directly to the frame. The controller and is located inside an enclosure mounted to the back of the post cleaner frame.



# MAC Post Cleaner

## TECHNICAL SPECIFICATIONS



### Required User Data:

- Specify directional flow of the batteries (left to right or right to left when facing the operator control panel side of the cleaner)
- Specify electrical requirement

### Installation:

- Normally mounts in-line with your flow-through production conveyor
- Mounted on a standard 102 mm (4-inch) thick reinforced concrete floor or pad. Holes for lag bolting to the floor are provided.

### Production Rate:

15-20 automotive size batteries per minute.

### Programmable Controller:

"State of the art" controller is standard equipment.

### Operational Requirements:

**Personnel:** Set-up: One - Operation: None

**Standard Electrical:** 480V, 3-Phase, 60Hz, 15 AMP, or as required.

**Electrical demand:** 12 KVA

**Compressed Air:** 1.55CFM @ 80 psi

**Ventilation:** Customer supplied as needed to meet local requirements

### Weights/Dimensions:

1524x2235x1397 mm (60x88x55 inches)

254 kg (560 lbs.)



*Helping to make the best batteries...yours.*

**MAC Engineering and Equipment Company, Inc.**

2775 Meadowbrook Road, Benton Harbor, Michigan 49022, U.S.A.

Telephone: (269) 925-3295 or 1-800-756-8608 Fax: (269) 925-3305

e-mail: [maceng@mac-eng.com](mailto:maceng@mac-eng.com)

For a preview of our equipment visit: [www.mac-eng.com](http://www.mac-eng.com)