



MAC FOP Paster

(Fixed orifice Paster)

Accurate double sided pasting for gravity cast or continuous grids

- ◆ Gravity Cast or Continuous
- ◆ Double Sided Pasting
- ◆ Tight Tolerances
- ◆ High Speed

The MAC FOP pastes gravity cast or continuous lines using true Fixed Orifice Pasting technology. Paste hopper width available in 305 mm (12 inch) or 381mm (15 inch).

Gravity Cast or Continuous: For gravity cast grids, a vacuum or mechanical feeder feeds the grids into the Fixed Orifice Paster. Drive rolls then push the grids through the underside of the pasting orifice. Precisely casted and plished FOP compatible grids are required.

This paster can also be outfitted with paper applicator rolls and a strip guide to be used with any continuous process. A paper feeder is added under the strip inlet guide assembly for the bottom paper and a second feeder above the finish rolls for the top paper. These are independently adjustable and can handle up to 558 mm (22 inch) diameter paper rolls. Paper can be perforated before application for better embedding into pasted plates.

Double Sided Pasting: FOP technology allows for beltless grid pasting with accurate coverage of paste on both sides of the grid. Typical top side overpaste is 0.25mm (0.010") and bottom side overpaste of 0.25mm (0.010").



Overpasting helps prevent grid wire corrosion by completely covering the grid wires with paste.

Tight Tolerances: The MAC FOP uses a variable speed independently powered paste dispensing hopper featuring Orifice plate type tooling (no trowel roll). It has automatic hold-down clamps that secure the hopper to the paster without operator attention. Easy screw adjustment of the hopper height controls paste thickness side-to-side.

High Quality: By not using cotton belts, the FOP eliminates the belt thickness variation that sometimes causes inconsistent paste thickness. Also, the FOP's precisely engineered and machined Orifice plate creates a fixed pasting gap that applies a specific amount of paste. These features allow for more precise pasting tolerances that are optimal for high quality plate production. AGM products require such tight plate thickness controls for proper assembly.

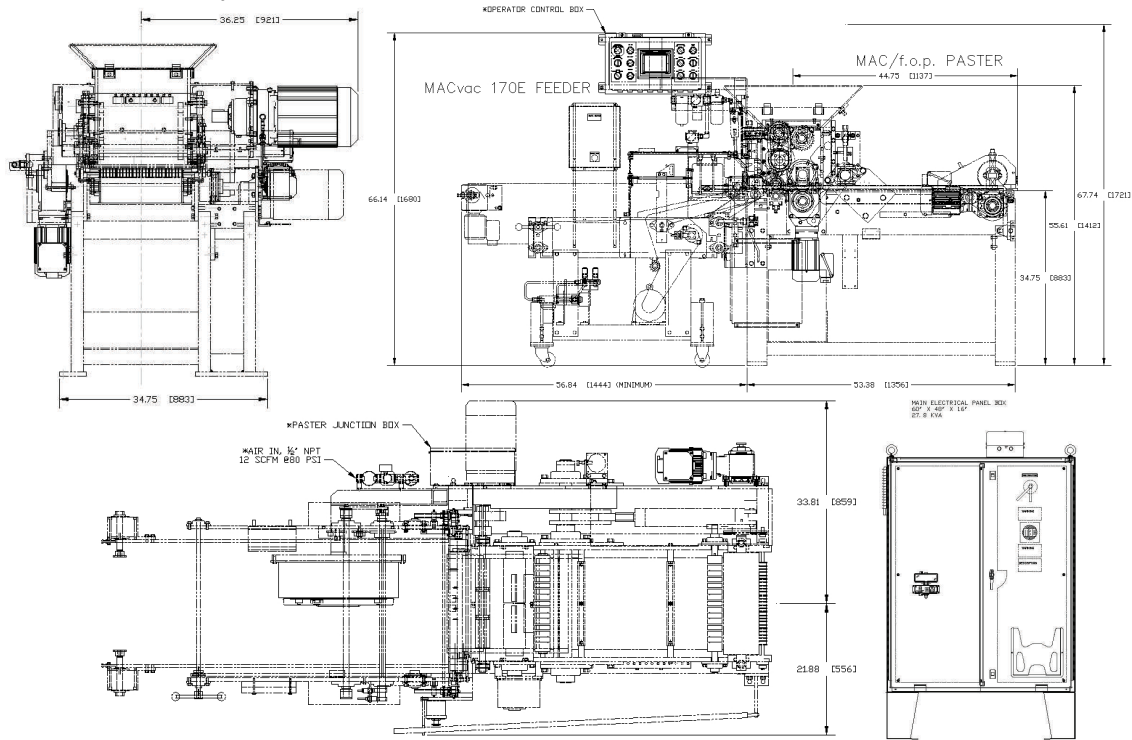
High Speed: Gravity cast plates can be pasted at a rate of up to 170 panels per minute on a vacuum feeder and up to 200 panels per minute on a mechanical feeder.

Continuous strip, with paper on top and bottom, can move at speeds of up to 55 meters (180 feet) per minute. Finish rolls have a separate drive to keep the strip properly tensioned between the paste hopper and the finish rolls. The MAC FOP speed is easily adjusted by variable speed control on independent drives.

With the MAC FOP, you can paste gravity cast grids or continuous strip with top and bottom coverage while achieving tight tolerances and high quality.

MAC FOP

TECHNICAL SPECIFICATIONS



Shown here with MACvac Feeder for gravity cast grids. MAC FOP for continuous would include paper applicator rolls and strip guide.

Operational Requirements:			
Plate width range: (lugs excluded)	6 to 15 inch (152 to 381 mm)	Plate thickness tolerance capability:	± .08 mm (.003 inches)
Hopper base width:	305 mm (12 inch) 381 mm (15 inch)	Compressed Air: (Clean/dry)	70 CFM @ 80 psi/5.52bar: hopper raise/lower, 12 CFM @ 80psi: vacuum feeder
Electric motors on paster: Electric motor on feeder:	(1) 10, (1) 3.0, (2) 1.0 HP (1) 1.5 HP 1750 RPM @ 60Hz T.E.F.C. gear motors	Speeds: (maximum speeds dependent on grid design and other factors)	Vacuum feeder: 170 panels/min Mechanical feed: 200 panels/min Continuous: 55 m/min (180 feet)
Height with hopper down: Height with hopper up:	1412 mm (55.61 inches) 1721 mm (67.74 inches)	Electrical Consumption:	27.8 kVA maximum
Personnel:	One	Belt and Hopper Drive:	Mechanical
Ventilation:	Mechanical function does not rely on ventilation. Water only for cleaning.	Speed adjustment method:	Variable frequency drive gear motors for hopper, belt, and finishing roll
Standard Electrical requirements:	220-480V, 3 phase, 50-60 Hz	Approximate Shipping Weights and Dimensions:	One Crate: 2388 mm x 1626 mm x 1626 mm (94 in. x 64 in. x 64 in.) 2360 Kgs. (5,204 lbs.)



Helping to make the best batteries...yours.

MAC Engineering and Equipment Company, Inc.

2775 Meadowbrook Road, Benton Harbor, Michigan 49022, U.S.A.

Telephone: +1 (269) 925-3295 Fax: +1 (269) 925-3305

e-mail: maceng@mac-eng.com

For a preview of our equipment visit: www.mac-eng.com